

Way2Migration MBOX Converter Tool – User Guide

Version: 25.5

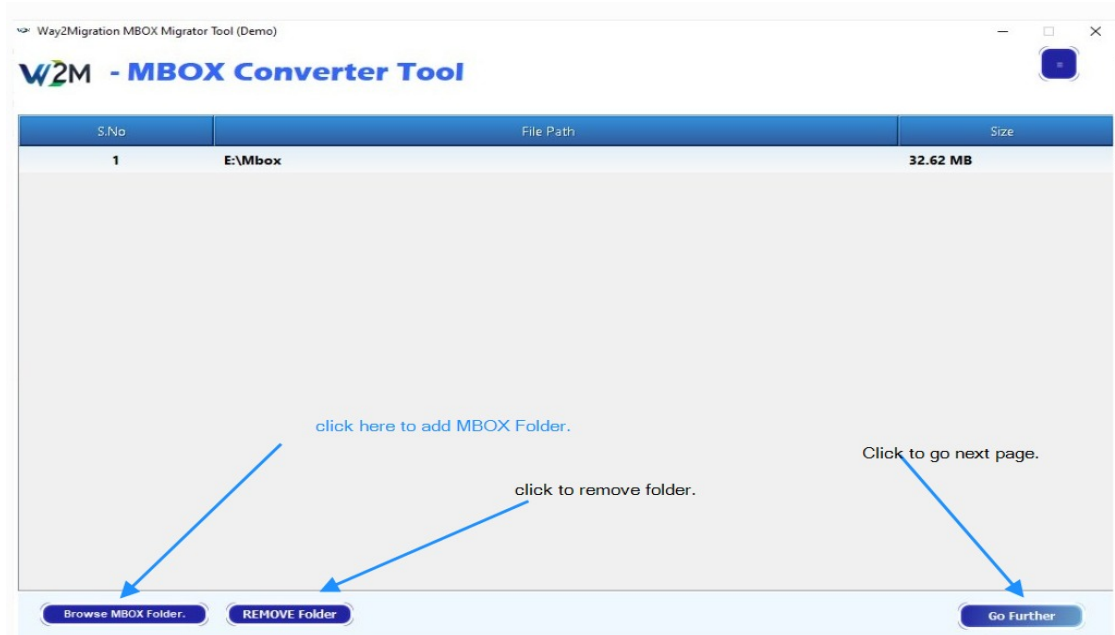
Website: <https://way2migration.com/>

Introduction

Way2Migration MBOX Converter Tool is a professional and user-friendly solution designed to convert MBOX mailbox data into PST and other supported formats while maintaining complete data integrity. This guide explains installation, working steps, and reporting features.

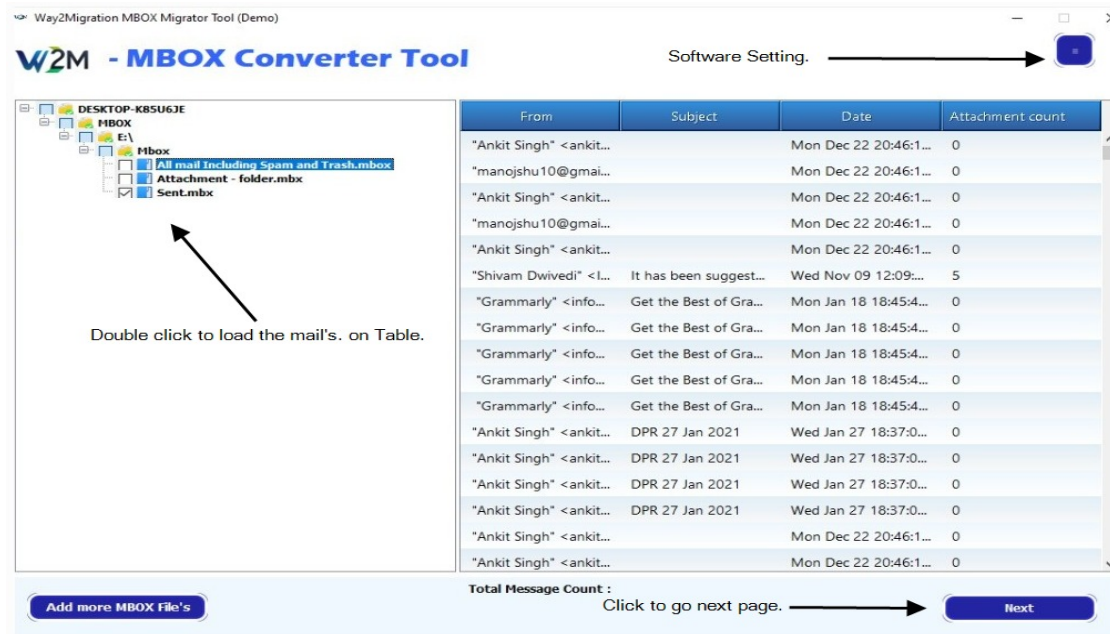
Step-1: Add MBOX Folder

- 1 Click on **Browse MBOX Folder** to add MBOX files or folders.
- 2 Loaded folders are listed with file path and size.
- 3 Use **REMOVE Folder** to delete selected folders.
- 4 Click **Go Further** to proceed.



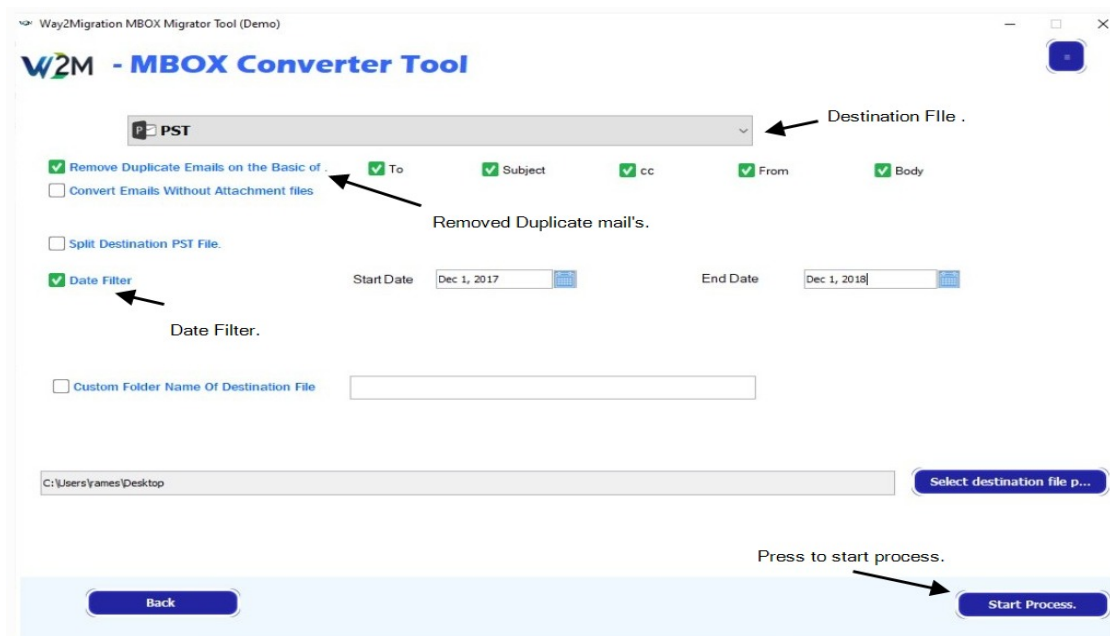
Step-2: Preview MBOX Mailbox Data

- 1 Mailbox folder hierarchy is displayed in a tree view.
- 2 Double-click on a folder to load emails in the preview table.
- 3 Preview includes From, Subject, Date, and Attachment Count.
- 4 Click **Next** to continue.



Step-3: Select Destination & Apply Filters

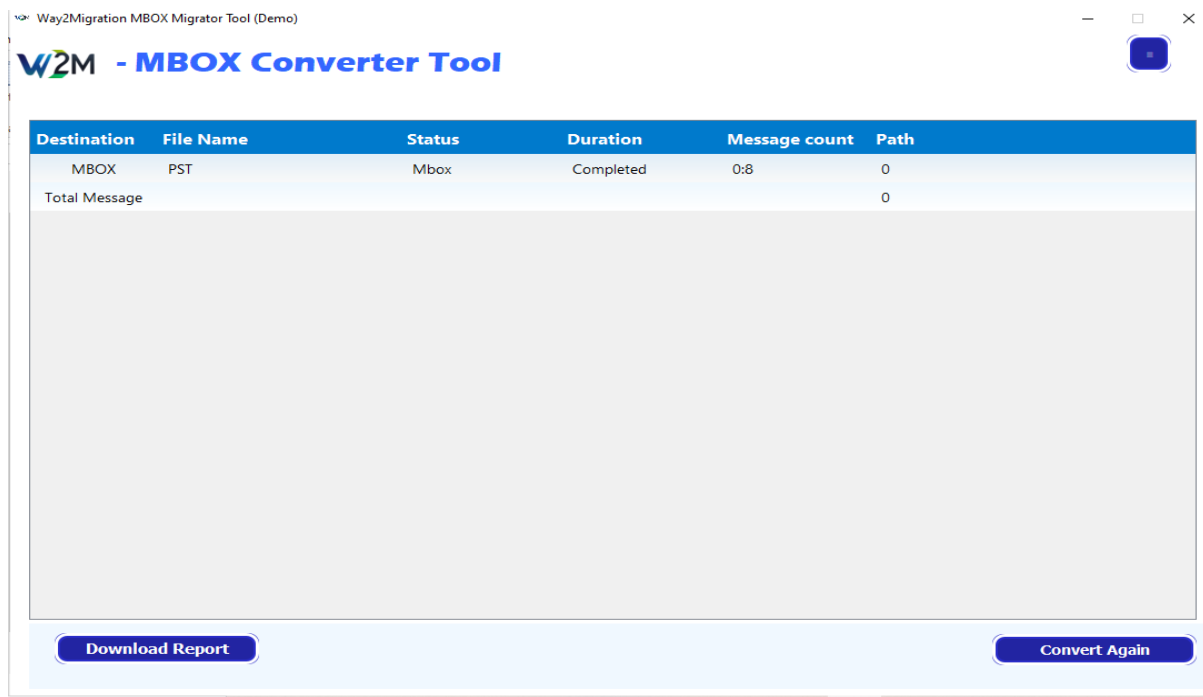
- 1 Choose destination format such as PST.
- 2 Remove duplicate emails based on To, From, Subject, CC, and Body.
- 3 Apply Date Filter for selective migration.
- 4 Set custom destination folder name if required.
- 5 Select destination path and click **Start Process**.



View and Save Conversion Report

After the conversion process is completed, the software generates a detailed conversion report. This report provides a summary of the migration process and helps in verification and record keeping.

- 1 Destination Format
- 2 File Name
- 3 Conversion Status
- 4 Duration of Conversion
- 5 Total Message Count
- 6 Destination Path



The screenshot shows the 'Way2Migration MBOX Migrator Tool (Demo)' window. The title bar includes the application name and standard window controls. The main area features the 'W2M - MBOX Converter Tool' logo and a table with the following data:

Destination	File Name	Status	Duration	Message count	Path
MBOX	PST	Mbox	Completed	0:8	0
Total Message				0	

Below the table, there are two buttons: 'Download Report' and 'Convert Again'.

Users can click on **Download Report** to save the conversion summary in CSV format. The **Convert Again** option allows users to perform another conversion without restarting the tool.