



W2M – MSG Converter Tool

Professional Software User Guide

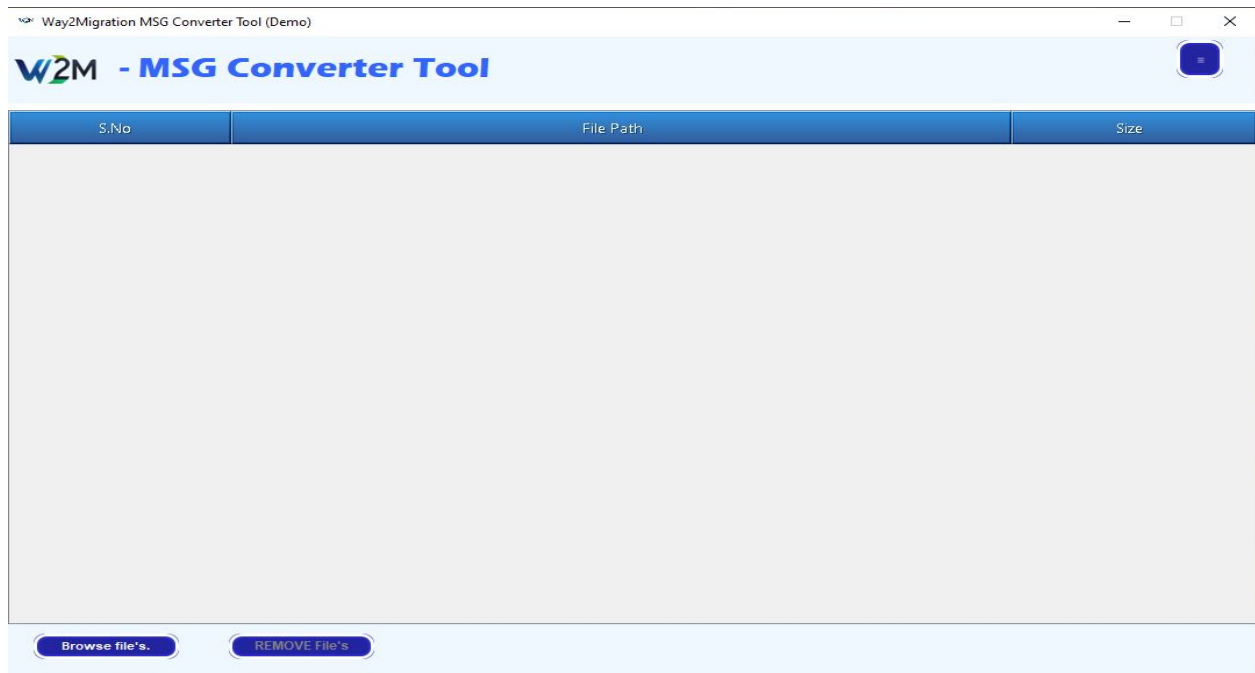
Website: <https://way2migration.com>

Support Email: support@way2migration.com

Live Chat: tawk.to/chat/67c1e36083d948190d41ec71/1il6m0d0t

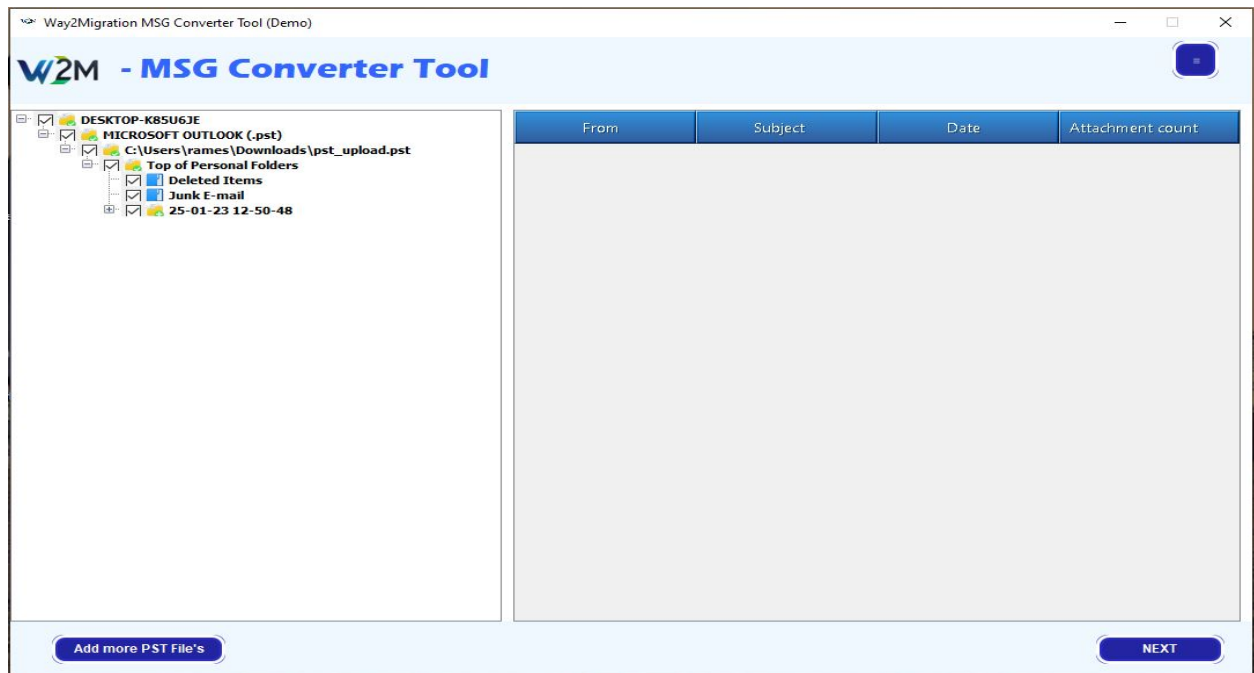
Step 1: Launch the W2M – MSG Converter Tool

Open the W2M – MSG Converter Tool on your system. The main interface allows you to browse and add MSG files for conversion.



Step 2: Add MSG / PST Files for Conversion

Click on the Browse Files option to add MSG or PST files. All added files and folders will appear in the left panel.



Step 3: Apply Filters and Select Output Options

Apply filters such as duplicate removal, date filter, file splitting, and select the destination path.

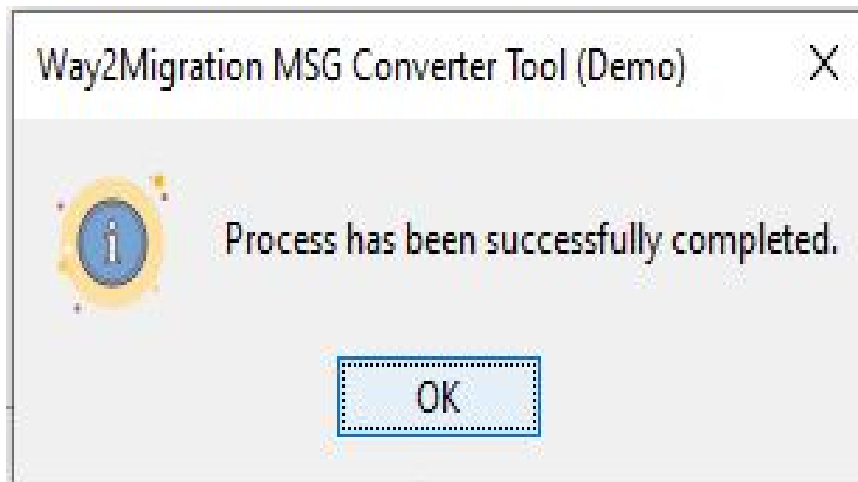
The screenshot displays the 'Way2Migration MSG Converter Tool (Demo)' window. The interface is titled 'W2M - MSG Converter Tool'. At the top, there is a dropdown menu showing 'PST'. Below this, there are four checked options with checkboxes:

- ☒ Remove Duplicate Mail On basis of To, From, Subject, Bcc & Body
- ☒ Date Filter
 - Start Date : 05-Jan-2024
 - End Date : 04-Jan-2025
- ☒ Split output PST file into smaller parts. (1 MB)
- ☒ Customize Root Folder Name

Below these options, there is a text field for 'Output File Saving Path:' containing 'C:\Users\rames\Desktop'. To the right of this field is a button labeled 'Select destination file path'. At the bottom of the window, there are two buttons: 'Previous' on the left and 'Convert.' on the right.

Step 4: Start Conversion Process

Click on the Convert button to start the conversion process.



Step 5: Conversion Completed Successfully

Once the conversion is completed, a confirmation message will appear.

